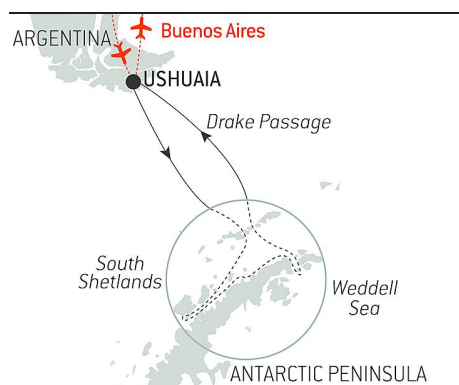


Emblematic Antarctica

From **18/11/2023**
to **28/11/2023**

Ship: **LE BORÉAL**

From **Ushuaia**
to **Ushuaia**



If there is one place on the globe that fires the imagination of travellers and arouses in them an instant thirst for adventure, it is the **immaculate and faraway lands of the White Continent**. Inhabited by a **surprising endemic fauna**, the Antarctic will welcome you during an **11-day expedition cruise**.

At the border between the Atlantic and the Pacific oceans, you will enter **Drake Passage**. At the roaring fifties and the screaming sixties, the wind blows and the waves beat against the stern of the ship. In the sky, **cape petrels** lead you toward their realm until you reach the first of the continent's lands.

Ice is there in all its forms. The mountainous landscapes open up to give way to huge **calving glaciers**, **tabular icebergs** drift in the middle of the Southern Ocean, and the sea ice shimmers in the distance. On board, the **naturalists** share with you the secrets of this **unique ecosystem**. As you near the shores, the first penguins appear. **Gentoo, Adélie, chinstrap**: these surprising birds, emblematic of the Antarctic, share their beaches with **leopard, crabeater** and **Weddell seals**. During an outing on land or at sea, in a zodiac dinghy or a kayak, you will move through a stunning scenery bathed in polar light.

We are privileged guests in these extreme lands where we are at the mercy of weather and ice conditions. Landings on certain sites and the observation of certain wildlife cannot be guaranteed. They vary from day to day, making each PONANT cruise a unique experience. The Captain and the Expedition Leader will make every effort to ensure that your experience is as rich as possible, while complying with the safety rules and instructions imposed by the IAATO.



The information in this document is valid as of 19/04/2024

Emblematic Antarctica

YOUR STOPOVERS :

USHUAIA

Embarkation 18/11/2023 from 16:00 to 17:00

Departure 18/11/2023 at 18:00

Capital of Argentina's **Tierra del Fuego** province, Ushuaia is considered the gateway to the White Continent and the South Pole. Nicknamed "**El fin del mundo**" by the Argentinian people, this city at the end of the world nestles in the shelter of mountains surrounded by fertile plains that the wildlife seem to have chosen as the ultimate sanctuary. With its exceptional site, where the Andes plunge straight into the sea, Ushuaia is one of the most fascinating places on earth, its very name evocative of journeys to the unlikely and the inaccessible...

CROSSING THE DRAKE PASSAGE

Arrival 19/11/2023

Departure 20/11/2023

Use your days spent in the **Drake Passage** to familiarise yourself with your ship and deepen your knowledge of the Antarctic. The Expedition Leader will first present the IAATO rules of conduct that must be observed during landings in the region and will explain everything you need to know about the zodiac outings. Lectures about the history and wildlife of the Antarctic will be an opportunity for you to learn more about this magical region, where every cruise is a **unique experience**. You will experience exceptional sailing moments on board and join the naturalist-guides on your ship's exterior decks to look out for albatrosses, cape petrels, and other seabirds flying over the Drake Passage.

ANTARCTIC PENINSULA

Arrival 21/11/2023

Departure 25/11/2023

Succumb to the magic of a place unlike any other. To this day, the mythical **Antarctic Peninsula** still holds real fascination and promises its visitors unforgettable moments. Throughout your adventure in this icy realm, you will find yourself in the heart of a **spectacular decor** in subtle shades of blue and white, surrounded by **exceptional wildlife**. Penguins, humpback whales, seals and giant petrels are at home here, as are elephant seals, fur seals, Antarctic minke whales, and orcas. Depending on which sites you will be lucky enough to visit, you may get the chance to observe them and share with them the beauty of these extreme parts.

Each day, based on ice conditions, the Captain and the Expedition Leader will suggest **zodiac outings or landings** to discover the infinite riches of the Antarctic Peninsula. Glaciers, ice floe, tabletop icebergs, mountain peaks that plunge straight into the sea, volcanic beaches, research stations, enchanting bays, and vestiges of the whaling industry: these are the faces of the Antarctic that will likely reveal themselves to you, in a hushed and surreal atmosphere. You will sail in the wake of Jean-Baptiste Charcot, Adrien de Gerlache and Sir Ernest Shackleton, great Antarctic explorers who, from the 19th century, set out to conquer these remote and uninhabited lands.

CROSSING THE DRAKE PASSAGE

Arrival 26/11/2023

Departure 27/11/2023

If there is one place, one sea, one waterway dreaded by tourists, researchers and hardened seafarers alike, it is undoubtedly **Drake Passage**. Situated at the latitude of the infamous Furious Fifties winds, between Cape Horn and the South Shetland Islands, it is **the shortest route to connect Antarctica to South America**. Seasoned navigators will tell you that you must earn your visit to the White Continent! As the Antarctic convergence zone where cold currents rising up from the South Pole meet warmer equatorial water masses, Drake Passage harbours a very diverse marine fauna. Don't forget to look to the sky to catch a glimpse of elegant albatross and **Cape petrels**, playfully floating about in the wind around your ship.

USHUAIA

Arrival 28/11/2023 early morning

Disembarkation 28/11/2023 at 07:00

Capital of Argentina's **Tierra del Fuego** province, Ushuaia is considered the gateway to the White Continent and the South Pole. Nicknamed "**El fin del mundo**" by the Argentinian people, this city at the end of the world nestles in the shelter of mountains surrounded by fertile plains that the wildlife seem to have chosen as the ultimate sanctuary. With its exceptional site, where the Andes plunge straight into the sea, Ushuaia is one of the most fascinating places on earth, its very name evocative of journeys to the unlikely and the inaccessible...