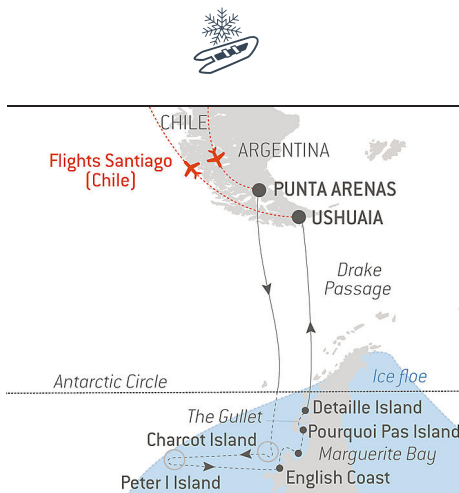


The Emperor Penguins of Bellingshausen Sea

From **30/10/2022**
to **13/11/2022**

Ship: **LE COMMANDANT CHARCOT**

From **Punta Arenas**
to **Ushuaia**



Overnight in Santiago + flight Santiago/Punta Arenas
+ transfers + flight Ushuaia/Santiago

Beyond **Peter I Island** and **Charcot Island**, this exceptional cruise will take you **into the heart of the Bellingshausen Sea**.

Named in honour of the Russian admiral and explorer who discovered Antarctica in 1820, this sea in the **Southern Ocean**, covered by ice floe most of the time, is hard to reach and practically **unexplored**.

But the reward lives up to the challenge: **emperor penguins**, a unique species endemic to the Antarctic and almost never observed, live here. This animal, elegant and majestic, is **the promise of emotional encounters**.

In this season, as winter gradually gives way to the austral spring, you may be lucky enough to catch a glimpse of the world's largest birds wandering the ice floes on the horizon, or emancipated juveniles learning to swim as the southern summer approaches.

We are privileged guests in these extreme lands where we are at the mercy of weather and ice conditions. Our navigation will be determined by the type of ice we come across; as the fast ice must be preserved, we will take this factor into account from day to day in our itineraries. The sailing schedule and any landings, activities and wildlife encounters are subject to weather and ice conditions. These experiences are unique and vary with each departure. The Captain and the Expedition Leader will make every effort to ensure that your experience is as rich as possible, while respecting safety instructions and regulations imposed by the IAATO.



The information in this document is valid as of 06/07/2022

The Emperor Penguins of Bellingshausen Sea

YOUR STOPOVERS :

PUNTA ARENAS

Embarkation 30/10/2022 from 16:00 to 17:00

Departure 30/10/2022 at 18:00

Capital of the Magallanes Region and of the Chilean Antarctic, this handsome port city will charm you with its history and traditions. Once inhabited by several indigenous tribes, Punta Arenas has maintained an architectural style that remains true to its heritage.

AT SEA ABOARD LE COMMANDANT CHARCOT

Arrival 31/10/2022

Departure 01/11/2022

Spend exceptional moments sailing aboard *Le Commandant Charcot*, the world's first luxury polar exploration vessel and the first PC2-class polar cruise ship capable of sailing into the very heart of the ice, on seas and oceans which the frozen conditions render inaccessible to ordinary ships. *Le Commandant Charcot* is fitted with oceanographic and scientific equipment selected by a committee of experts. Take advantage of the on-board lectures and opportunities for discussion with these specialists to learn more about the poles. Participate in furthering scientific research with PONANT and let us discover together what these fascinating destinations have yet to reveal to us.

CROSSING THE ANTARCTIC CIRCLE

Arrival 02/11/2022

Departure 02/11/2022

Weather permitting, we'll cross the mythic line of the **Antarctic Polar Circle**, located along **66°33' south of the Equator**. This iconic area demarcates the point from which it is possible to view the midnight sun during the December solstice. Within this circle, the sun remains above the horizon for 24 consecutive hours at least once a year. Crossing this line, an experience known to few people, is sure to be an unforgettable highlight of your cruise through the polar regions.

EXPEDITION TO CHARCOT ISLAND

Arrival 03/11/2022

Departure 03/11/2022

When he discovered this island surrounded by sea ice in 1910 from aboard the *Pourquoi Pas ?* as he mapped Alexander Island, **Jean-Baptiste Charcot** had not be able to get less than 40 miles away from it. Situated in a zone that experiences frequent low-pressure systems and regular cloud cover, the island remains in many ways an enigma. It is **entirely covered in ice and sheer cliffs**, with the exception of the rocky outcrops extending over a dozen kilometres in

the far north-west. The ice in the narrowest part of Wilkins Sound has been cracking in recent times, thus officially detaching this island from its neighbour, Alexander Island, lying 50 km away. Very few people have landed on this **largely untouched island**, whose waters attract numerous seabirds, such as petrels, Antarctic terns and skuas.

AT SEA ABOARD LE COMMANDANT CHARCOT

Arrival 04/11/2022

Departure 04/11/2022

Spend exceptional moments sailing aboard *Le Commandant Charcot*, the world's first luxury polar exploration vessel and the first PC2-class polar cruise ship capable of sailing into the very heart of the ice, on seas and oceans which the frozen conditions render inaccessible to ordinary ships. *Le Commandant Charcot* is fitted with oceanographic and scientific equipment selected by a committee of experts. Take advantage of the on-board lectures and opportunities for discussion with these specialists to learn more about the poles. Participate in furthering scientific research with PONANT and let us discover together what these fascinating destinations have yet to reveal to us.

EXPEDITION TO PETER I ISLAND

Arrival 05/11/2022

Departure 05/11/2022

You will then head for the legendary **Peter I Island**. Located 450 km away from the Atlantic coast, it was discovered in 1821 by the Russian explorer Fabian Gottlieb von Bellingshausen, who named it in honour of the Russian tsar Peter the Great. In 1909, Captain Charcot sighted it for the first time from aboard the *Pourquoi Pas ?*, but was unable to land there: *"In the parting mists, one or two miles away, an enormous black mass shrouded in clouds appears suddenly before us: it is Peter I Island."* **Surrounded by pack ice and with about 95% of its surface covered by ice**, this volcanic island, whose highest peak reaches 1,640 metres, is protected by ice cliffs some 40 metres tall, making any approach difficult.

ENGLISH COAST - IN SEARCH OF EMPEROR PENGUINS

Arrival 06/11/2022

Departure 07/11/2022

Along the English Coast, head off in search of emperor penguin. Brave the magnificent, quasi-unexplored desert of ice to be among the lucky few to observe these majestic penguins and enjoy this rare and intense experience. Emperor penguins are the largest of all living penguin species and they are champions at adapting to the harsh Antarctic climate. They live inland, where they protect their eggs between their feet and their abdomen during winter, and cover long distances in search of food.

MARGUERITE BAY

Arrival 08/11/2022

Departure 08/11/2022

The icebergs are each more majestic than the next and scattered around the deep and intense blue waters of Marguerite Bay, one of the most beautiful regions in the Antarctic. It is delimited in the north by the mountainous Adelaide Island, in the south by George VI Sound and Alexander Island, and in the east by the Fallières Coast. Charcot

named it after his wife during his second expedition to the Antarctic between 1908 and 1910. In 1909, in the southern summer when the skies are at their clearest, he led an important scientific mission to map and study this region. The bay is home to a number of cetaceans and you may get the chance to observe leopard seals or Adelie penguins.

STONINGTON ISLAND

Arrival 09/11/2022

Departure 09/11/2022

In the northeastern part of Marguerite Bay, along Graham Land, you will discover the small island of Stonington. The island was a British research station from 1946 to 1950 and later from 1960 to 1975. Numerous expeditions setting off from this station on dog sledges enabled the mapping of a significant portion of the Antarctic Peninsula. The two-storey steel-framed buildings, whose vestiges are still visible, could accommodate 6 to 17 people. Equipment and facilities from that time can still be found there: the generator, the dog pens, radio equipment and weather instruments, the water reservoir and a storage space. The island is now an important breeding ground for Antarctic terns and south polar skuas.

POURQUOI PAS ISLAND

Arrival 09/11/2022

Departure 09/11/2022

Le Commandant Charcot will land on the coast of Pourquoi Pas Island, so named in the 1930s by John Riddoch Rymill in honour of Jean-Baptiste Charcot, who discovered it from aboard his ship *Le Pourquoi Pas ?* during his second expedition to Antarctica between 1908 and 1910. This mountainous island, situated in the north of Marguerite Bay between Graham Land and Adelaide Island, is 28 km long and 14 km large. It is scattered with narrow fjords and snow-covered mountains. You will go to shore in a zodiac dinghy with your expedition team and you could get the chance to observe Adelie penguins going about their business on the island's rocky shores.

THE GULLET

Arrival 10/11/2022

Departure 10/11/2022

The sumptuous landscapes of this narrow channel between Adelaide Island and Graham Land attract all visitors sailing towards Marguerite Bay. It is like an ice palace, its immaculate white walls reflected in the frozen mirror formed by the waters of the Southern Ocean, scattered with icebergs and gleaming blocks of ice. This passage was explored for the first time by the Jean-Baptiste Charcot expedition in 1909, which sketched its position. It was then surveyed in 1936 by the British expedition under John Rymill. It is here in this magical setting that some of the first subaquatic images of the Antarctic were shot during Philippe Cousteau's four-month expedition to Antarctica between 1972 and 1973.

DETAILLE ISLAND

Arrival 10/11/2022

Departure 10/11/2022

Detaille Island is a small island situated off the Loubet Coast in the Crystal Sound, a magnificent region surrounded by snow-covered peaks. A British research station was set up there in 1956, ahead of the International Geophysical Year 1957-58. Like the International Polar Years, organised for the first time in 1882-83, the purpose of this event was to take a coordinated approach to the geophysical research conducted by the different nations. With the island difficult to access, this station was shut down in 1959. The vestiges of the buildings and sledge dog pens that made it possible to map more than 4,000 miles around the island are now maintained by the United Kingdom Heritage Trust.

CROSSING THE DRAKE PASSAGE

Arrival 11/11/2022

Departure 12/11/2022

If there is one place, one sea, one waterway dreaded by tourists, researchers and hardened seafarers alike, it is undoubtedly **Drake Passage**. Situated at the latitude of the infamous Furious Fifties winds, between Cape Horn and the South Shetland Islands, it is **the shortest route to connect Antarctica to South America**. Seasoned navigators will tell you that you must earn your visit to the White Continent! As the Antarctic convergence zone where cold currents rising up from the South Pole meet warmer equatorial water masses, Drake Passage harbours a very diverse marine fauna. Don't forget to look to the sky to catch a glimpse of elegant albatross and **Cape petrels**, playfully floating about in the wind around your ship.

USHUAIA

Arrival 13/11/2022 early morning

Disembarkation 13/11/2022 at 08:00

Capital of Argentina's **Tierra del Fuego** province, Ushuaia is considered the gateway to the White Continent and the South Pole. Nicknamed "**El fin del mundo**" by the Argentinian people, this city at the end of the world nestles in the shelter of mountains surrounded by fertile plains that the wildlife seem to have chosen as the ultimate sanctuary. With its exceptional site, where the Andes plunge straight into the sea, Ushuaia is one of the most fascinating places on earth, its very name evocative of journeys to the unlikely and the inaccessible...