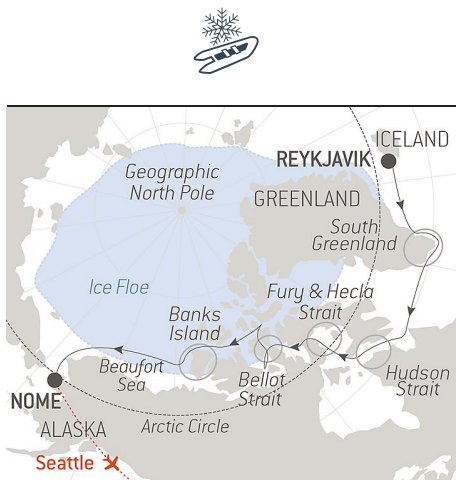


# The Northwest Passage

From **07/09/2022**  
to **01/10/2022**

Ship: **LE COMMANDANT CHARCOT**

From **Reykjavík**  
to **Nome, Alaska**



FLIGHT NOME/SEATTLE + TRANSFERS

For the very first time, PONANT invites you to discover the most emblematic but also the remotest sites of the **mythical Northwest Passage**.

Aboard the *Commandant Charcot*, the **first hybrid electric polar exploration ship**, relive the polar adventures of previous generations of explorers at the heart of this vast labyrinth of icy channels, exploring the three main routes that allow the Northwest Passage to be crossed.

Leaving from Reykjavik, you will sail along the south coast of Greenland, before reaching the **Hudson Strait**, named after the English sailor Henry Hudson, who mapped it for the first time in the early 17th Century.

Then you will chart a course towards the **Fury and Hecla Strait**, named after the ships of the explorer William Parry. Constantly covered in ice, this seawater channel, some 1900 metres wide at its narrowest point, represents an impassable obstacle for most ships. When you enter the passage, you will have the privilege of visiting Igloodik, an Inuit village that was only discovered in 1822.

A little further on, the **Bellot Strait** will offer you a unique sailing experience, in the midst of countless icebergs. You will then sail along Banks Island, famous for the wreck of HMS Investigator lying off shore – the ship was tasked to search for Sir John Franklin's lost expedition, but also for its national park, which is home to extremely rich fauna.

*We are privileged guests in these extreme lands where we are at the mercy of weather and ice conditions. Our navigation, mainly in the fjords, will be determined by the type of ice we come across; as the fast ice must be preserved, we will take this factor into account from day to day in our itineraries. The sailing programme, outings, activities and observation of fauna cannot be guaranteed and are subject to weather and ice conditions. The experiences are unique and vary from day to day and for each departure. The Captain and the Expedition Leader will make every effort to ensure that your experience is as rich as possible, while respecting safety instructions and regulations imposed by the AECO.*



The information in this document is valid as of 06/07/2022

# The Northwest Passage

## YOUR STOPOVERS :

### REYKJAVÍK

Embarkation 07/09/2022 from 19:30 to 20:30

Departure 07/09/2022 at 21:30

Iceland's capital stretches along the edge of a vast bay in the west of the country. **Perlan**, the "Pearl of Reykjavík", a museum located on 'Oskjuhlíð hill, offers a panoramic view of the lush, green landscapes. A little further, one can easily spot the signpost showing the way to the evangelical **Hallgrímskirkja** church, and to the historical centre where one can stroll along the Skólavörðustígur and the Laugavegur, two lively streets with charming small shops. For some relaxation just outside of the city, visitors have the opportunity to visit the Reykjanes peninsula and its famous thermal lagoons of the **Blue Lagoon**.

### AT SEA ABOARD LE COMMANDANT CHARCOT

Arrival 08/09/2022

Departure 08/09/2022

Spend exceptional moments sailing aboard *Le Commandant Charcot*, the world's first luxury polar exploration vessel and the first PC2-class polar cruise ship capable of sailing into the very heart of the ice, on seas and oceans which the frozen conditions render inaccessible to ordinary ships. *Le Commandant Charcot* is fitted with oceanographic and scientific equipment selected by a committee of experts. Take advantage of the on-board lectures and opportunities for discussion with these specialists to learn more about the poles. Participate in furthering scientific research with PONANT and let us discover together what these fascinating destinations have yet to reveal to us.

### SOUTHERN COAST OF GREENLAND

Arrival 09/09/2022

Departure 10/09/2022

Set sail in the traces of the Norwegian explorer Erik Le Rouge by travelling along the **south coast of Greenland**. Your ship will head deep into the longest network of fjords in the region, the **Prins Christian Sund**. This sumptuous natural canal, surrounded by **craggy mountains** and impressive **glaciers** will offer you stunning landscapes.

### AT SEA ABOARD LE COMMANDANT CHARCOT

Arrival 11/09/2022

Departure 12/09/2022

Spend exceptional moments sailing aboard *Le Commandant Charcot*, the world's first luxury polar exploration vessel and the first PC2-class polar cruise ship capable of sailing into the very heart of the ice, on seas and oceans which the frozen conditions render inaccessible to ordinary ships. *Le Commandant Charcot* is fitted with oceanographic and

scientific equipment selected by a committee of experts. Take advantage of the on-board lectures and opportunities for discussion with these specialists to learn more about the poles. Participate in furthering scientific research with PONANT and let us discover together what these fascinating destinations have yet to reveal to us.

## HUDSON STRAIT

Arrival 13/09/2022

Departure 17/09/2022

Linking Hudson Bay, the second largest bay in the world, to the Atlantic Ocean, the Hudson Strait was identified for the first time by the Venetian explorer Sebastian Cabot in 1517. However, it wasn't until 1660 that the English sailor Henry Hudson explored this maritime passage as far as the bay. Offering privileged access to the centre of Canada, in the 18th Century the Hudson Strait became a **commercial route, notably used for fur trading**. Some 800 km in length and **congested with ice** for most of the year, it will offer you a truly unique sailing experience.

## FURY AND HECLA STRAIT

Arrival 18/09/2022

Departure 18/09/2022

At the heart of the Arctic Ocean, set sail in the footsteps of the British explorer W.E. Parris who in 1822, during his desperate quest to find the North West Passage, discovered the **Fury and Hecla Strait**. The expedition that he led with two Royal Navy vessels, *HMS Fury* and *HMS Hecla*, in the hope of crossing the mythical maritime passageway, ended in failure. Trapped in the ice, the two ships were blocked to the north of Foxe Basin, but this allowed them to identify the strait separating the Melville peninsula and Baffin Island. **Covered by ice floe for the majority of the year**, this narrow stretch of sea is very difficult to access. When you enter the passage, you will have the privilege of visiting the Inuit village of Igloolik.

## BELLOT STRAIT

Arrival 19/09/2022

Departure 20/09/2022

A key stage in the North West Passage, the **Bellot Strait**, crossed by strong currents, promises you an **unforgettable sailing experience**. The entrance to the strait is dominated by the Ross Cairn. The buildings of Fort Ross also stand not far from here. Separating Somerset Island from the Boothia Peninsula, this 2-km-wide strait was discovered in 1852 by Captain William Kennedy of the Royal Navy, and the Frenchman Joseph-René Bellot, during an expedition in search of Sir John Franklin. Discover a **magnificent décor** covered in snow, fragmented by large ice floes. As you sail between them, your ship will perhaps be accompanied by a few polar bears.

## SAILING ICE FLOES IN THE NORTH OF THE ARCTIC ARCHIPELAGO

Arrival 21/09/2022

Departure 24/09/2022

At the far north of the American continent, you will sail in the most **northerly part of the Arctic archipelago**. Covering some 1.4 million km<sup>2</sup> and boasting more than 35,000 islands, this region offers **spectacular landscapes** made up of **sheer reliefs**

and **gigantic fjords**. Notably characterised by the particularly impressive scale of its channels, sculpted by glacial erosion and trapped in a thick ice floe for most of the year, the region has been little mapped or explored.

## BANKS ISLAND

Arrival 25/09/2022

Departure 26/09/2022

Located in the north of Canadian archipelago of the Northwest Territories, Banks Island, also known as Banks Land offers landscapes that are as sumptuous as they are spectacular. The island, covering some 70,000 km<sup>2</sup>, offers a landscape of hills and valleys as well as sheer cliffs and canyons, a result of the glacial erosion. To the north of the island, the **Aulavik National Park** is home to a very rich wildlife mainly consisting of Arctic wolves, muskox, caribou, Arctic foxes, lemmings and many varieties of birds.

## SAILING ICE FLOES IN BEAUFORT SEA

Arrival 27/09/2022

Departure 30/09/2022

Bordering the north coasts of Alaska and Canada, the **Beaufort Sea** was feared for centuries because of its extreme climatic conditions. Covered for most of the year with a **thick layer of ice**, and **unexplored until 1914**, this part of the Arctic Ocean, named in honour of the British Admiral Francis Beaufort, will reveal to you its sumptuous icy landscapes. Will a bit of luck, maybe you will cross the path of some Beluga, the region being renowned for hosting many colonies of these white whales.

## NOME, ALASKA

Arrival 01/10/2022 early morning

Disembarkation 01/10/2022 at 07:00

Located along the Bering Strait at the westernmost point of Alaska, **Nome** offers the rustic charm of a former gold-mining town, set in the middle of magnificent wilderness. As you weave in and out of the brightly coloured houses, you will discover the pioneering legacy that still marks local traditions. Fishing, **reindeer rearing**, sledge-racing... People here live from their manual labour. The surrounding plains provide stunning vantage points for observing Arctic fauna.